

Workstation – Creating a Readings Graph

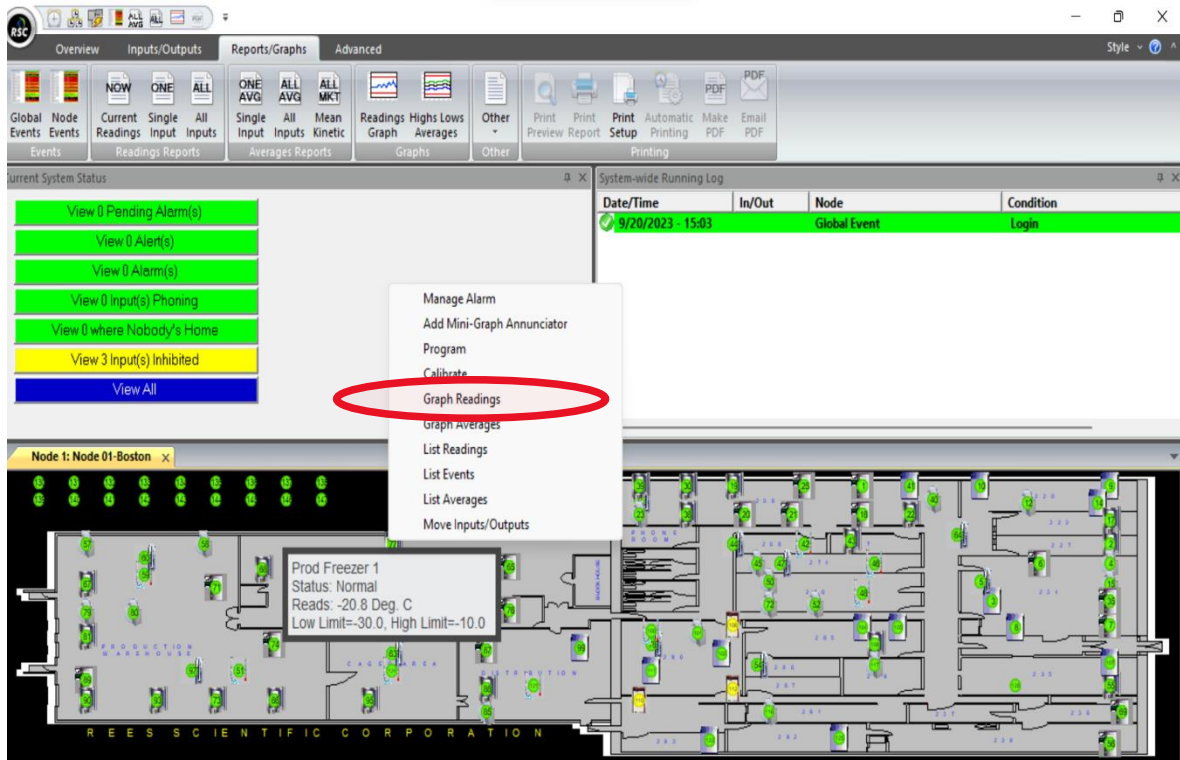
1. The first way that a graph can be generated is by selecting the “Reports/Graphs” tab at the top of the workstation. From this tab, you can select a variety of graph and/or report options

The screenshot displays a workstation interface with the following components:

- Top Menu:** Overview, Inputs/Outputs, **Reports/Graphs** (highlighted with a red circle), and Advanced.
- Toolbar:** Global Events, Node Events, Current Readings, Single Input, All Inputs, ONE AVG, ALL AVG, ALL MKT, Readings Graph, Highs Lows Averages, Other, Print Preview, Print Report, Print Setup, Automatic Printing, Make PDF, and Email PDF.
- Current System Status:** A panel with several colored buttons: View 0 Pending Alarm(s) (green), View 0 Alert(s) (green), View 0 Alarm(s) (green), View 0 Input(s) Phoning (green), View 0 where Nobody's Home (green), View 3 Input(s) Inhibited (yellow), and View All (blue).
- System-wide Running Log:** A table with the following data:

Date/Time	In/Out	Node	Condition
9/20/2023 - 15:03		Global Event	Login
- Floor Plan:** A detailed floor plan of a building labeled "REES SCIENTIFIC CORPORATION" with various rooms and equipment icons.

2. The second way is to right click on an input and then select “Graph Readings”



3. Once a graph has been created, you will have the option to select a different time frame or YAxis to modify the information being shown. You will need to select “Redraw” for any changes to be displayed.

