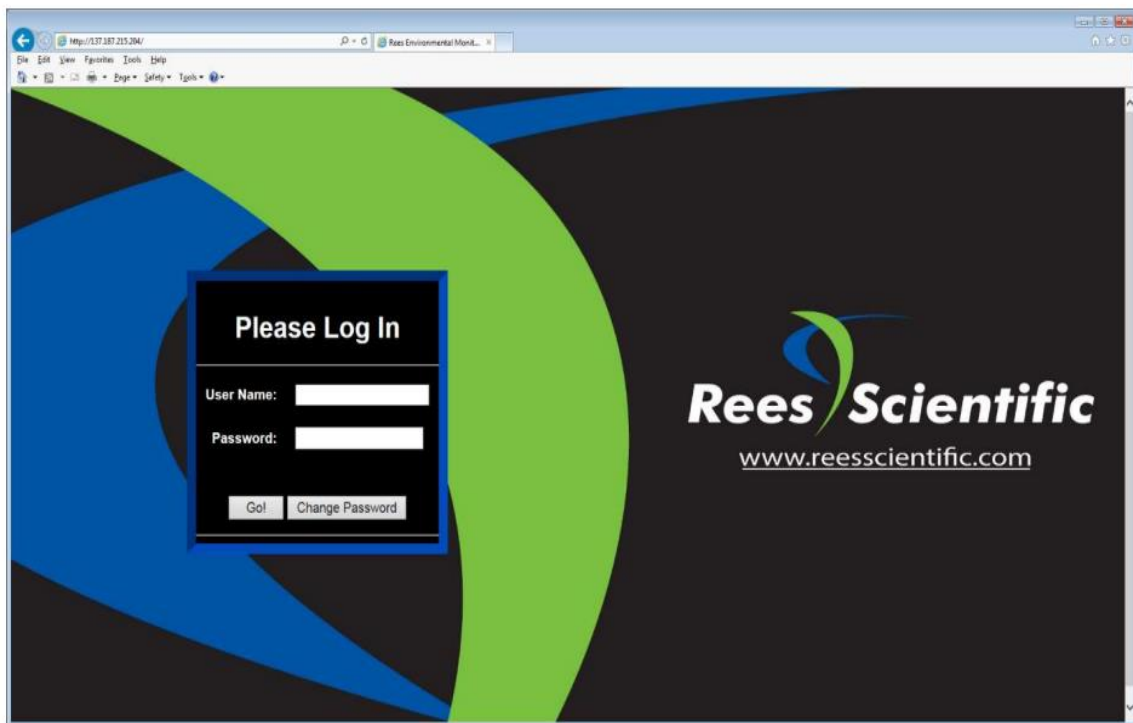


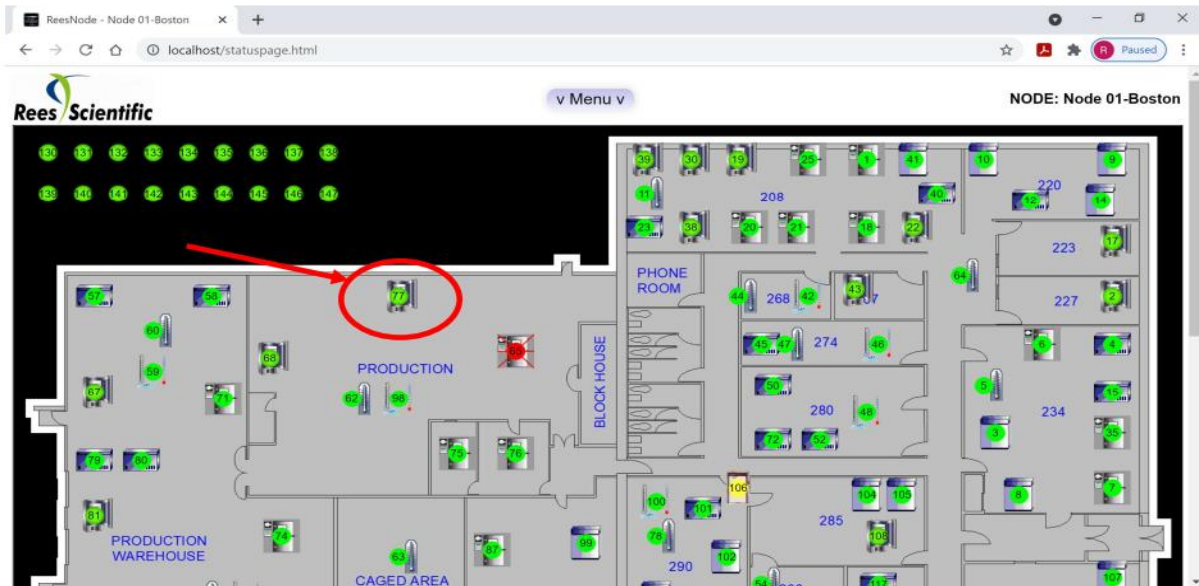
# Rees Presidio “On the Go” Web Browser

## Producing a Graph Reading Report

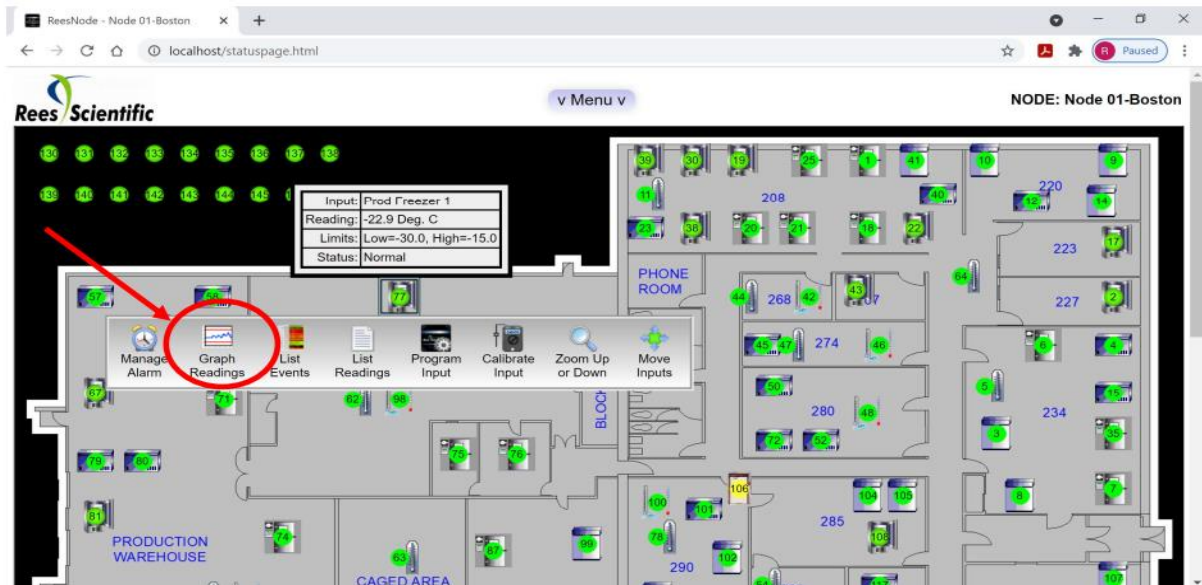
1. To access the Rees system, you must be on the Cleveland Clinic (either onsite or VPN). Type in your Type in your URL into the bar at the top of any web browser. i.e., <http://cc-clrees57> (Pharmacy).
2. Log in to the Rees system with your department’s username and password.



3. Click on the input you want to graph.



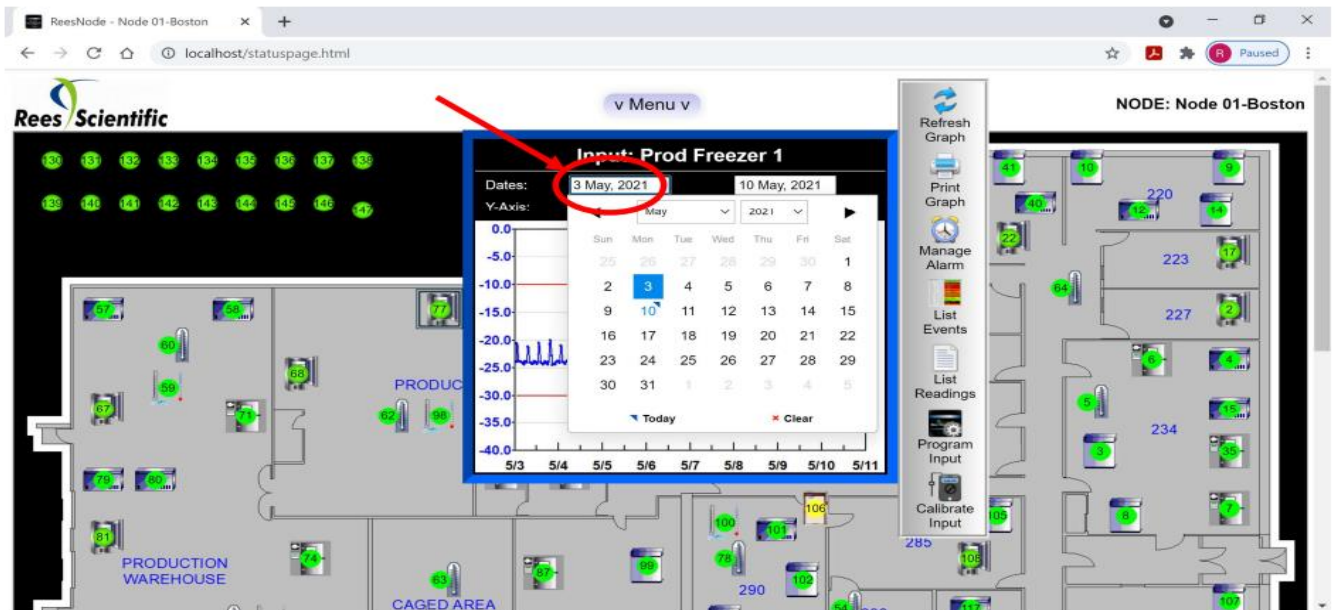
4. The following window will be displayed. Click "Graph Readings" icon



5. The graph reading will appear.



6. To change the date ranges for graph, click on dates, and select a new datge ranges.



7. Once new dates are selected, click the “Refresh Graph Icon” to redraw graph with new date ranges.



8. If you wish to print graph, click “print graph icon” and print.

